

Coronavirus disease (COVID-19)

Situation Report – 176

Data as received by WHO from national authorities by 10:00 CEST, 14 July 2020

Highlights

The latest edition of the [State of Food Security and Nutrition in the World](#), published yesterday, estimates that almost 690 million people went hungry in 2019 – up by 10 million from 2018, and by nearly 60 million in the past five years. The report forecasts [the COVID-19 pandemic could tip over 130 million more people into chronic hunger by the end of 2020](#).

In [South Sudan, WHO and the Ministry of Health are working to address stigma and fear](#), which are proving to be major barriers to tackling the COVID-19 pandemic.

A [new report from WHO highlights that violence and injuries are a leading cause of death](#) in the WHO European Region, accounting for almost 500 000 deaths a year. Evidence shows that violence can increase during and in the aftermath of disease outbreaks, particularly affecting [women, children and older people](#). WHO has also produced guidance specifically addressing [violence against women](#).

The WHO Information Network for Epidemics (EPI-WIN) has launched a new webinar series to manage infodemics through effective risk communication and community engagement. This is discussed in today's '[Subject in Focus](#)' below.

Situation in numbers (by WHO Region)

Total (new cases in last 24 hours)

Globally	12 964 809 cases (196 775)	570 288 deaths (3 634)
Africa	492 660 cases (15 085)	8 430 deaths (177)
Americas	6 780 428 cases (110 549)	288 430 deaths (1 853)
Eastern Mediterranean	1 302 297 cases (15 646)	31 751 deaths (523)
Europe	2 946 104 cases (20 691)	203 957 deaths (373)
South-East Asia	1 196 651 cases (33 095)	29 900 deaths (642)
Western Pacific	245 928 cases (1 709)	7 807 deaths (66)

Subject in Focus: Infodemics Management: Communicating uncertainty in the context of re-opening societies

The WHO Information Network for Epidemics (EPI-WIN) has launched a new webinar series to manage infodemics through effective risk communication and community engagement (RCCE). This series aims to build practical skills for regional and country responders. The first in the series, co-facilitated by the WHO Regional Office for Europe, dealt with communicating uncertainty during implementation and easing of public health and social measures (PHSM) during COVID-19.

Particularly during the early stages of public health emergencies, there are many unknowns and a high demand for fact-based information. The bigger a public health emergency is and the longer it lasts, the more unknowns there are likely to be. COVID-19 is a new disease that is affecting countries in different ways at different times, as well as affecting individuals with diverse risks. Implementation and easing of PHSM have highlighted the acute need to manage uncertainty through communication and engagement of communities. This webinar identified challenges of uncertainty related to the re-opening period, identified evidence-based RCCE tactics to meet these challenges, and highlighted examples of RCCE tactics used in countries.

The interactive session included 250 individuals from 73 countries and 184 organizations. During online polls, respondents reported that the main factor leading to confusion was various organizations provided conflicting information or recommendations about COVID-19. To avoid the perception that a change in recommendations is a result of error, organizations should set expectations for change, signal changes as they occur, and time- and date-stamp products. Coordination also plays an important role in minimizing confusion. Coordination in communication can best occur by ensuring that partners communicate the same messages, coordinate releases of information, explain discrepancies between messages and build confidence in the expertise of all responding agencies.

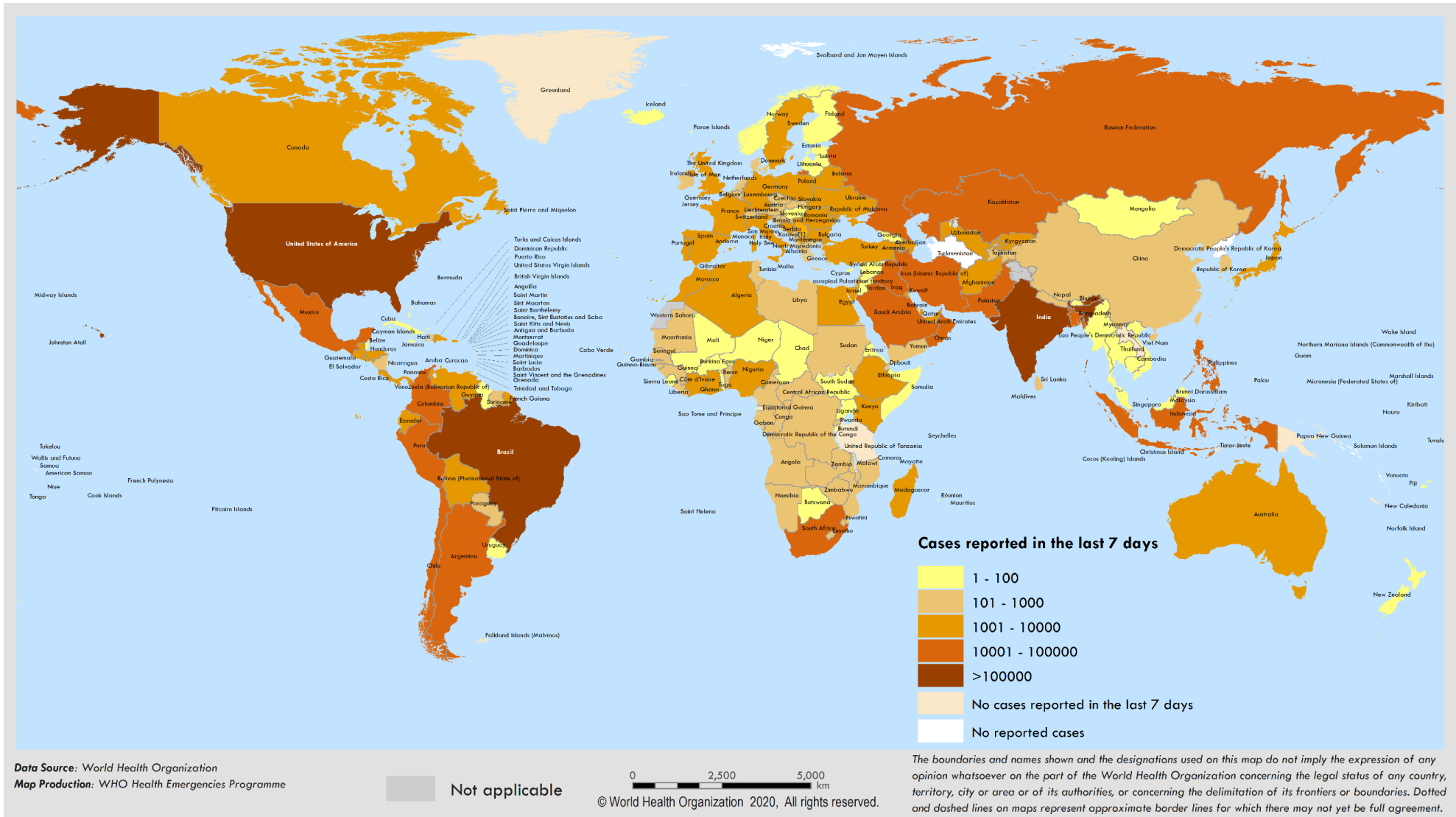
This will be an ongoing series and will include topics such as:

- Influencing Risk Perception through RCCE
- Creating New Norms and Sustaining Behavior Change
- Inclusion of Civil Society in Emergency Operations Planning and Response

Please find more information at www.who.int/epi-win

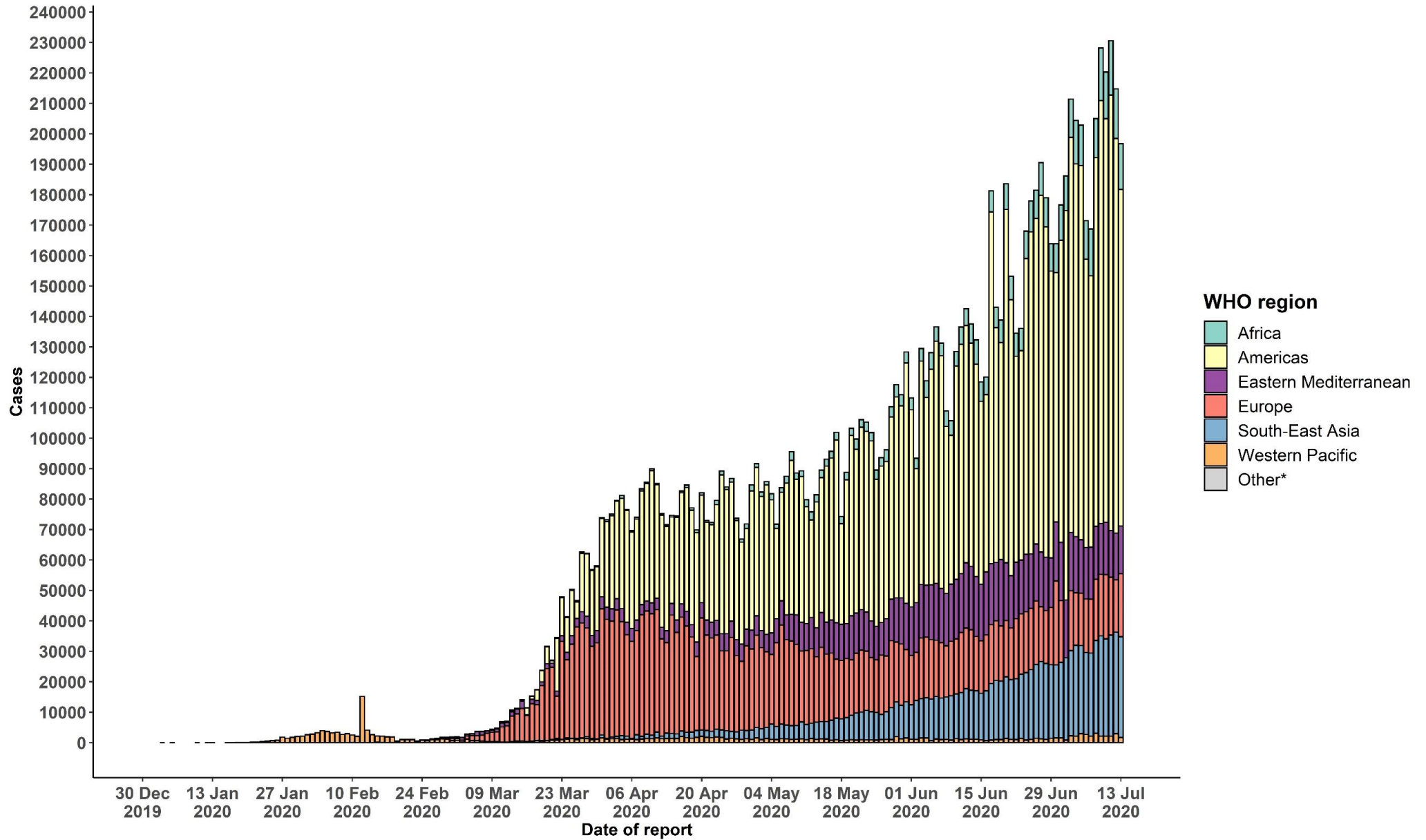
Surveillance

Figure 1. Number of confirmed COVID-19 cases reported in the last seven days by country, territory or area, 8 July to 14 July **



**See [Annex 1](#) for data, table and figure notes.

Figure 2. Number of confirmed COVID-19 cases, by date of report and WHO region, 30 December through 14 July**



**See [Annex 1](#) for data, table and figure notes.

Table 1. Countries, territories or areas with reported laboratory-confirmed COVID-19 cases and deaths, by WHO region. Data as of 10 AM CEST, 14 July 2020**

Reporting Country/ Territory/Area	Total confirmed cases	Total confirmed new cases	Total deaths	Total new deaths	Transmission classification ⁱ	Days since last reported case
Africa						
South Africa	287 796	11 554	4 172	93	Community transmission	0
Nigeria	33 153	595	744	4	Community transmission	0
Ghana	24 988	470	139	0	Community transmission	0
Algeria	19 689	494	1 018	7	Community transmission	0
Cameroon	15 173	0	359	0	Community transmission	1
Côte d'Ivoire	12 872	106	84	0	Community transmission	0
Kenya	10 294	189	197	12	Community transmission	0
Senegal	8 198	63	150	2	Community transmission	0
Democratic Republic of the Congo	8 074	42	189	1	Community transmission	0
Ethiopia	7 969	203	139	11	Community transmission	0
Guinea	6 170	29	38	1	Community transmission	0
Gabon	5 942	0	46	0	Community transmission	3
Mauritania	5 355	80	147	0	Clusters of cases	0
Madagascar	5 080	213	37	2	Clusters of cases	0
Central African Republic	4 321	33	53	0	Community transmission	0
Malawi	2 430	66	39	1	Clusters of cases	0
Mali	2 412	1	121	0	Community transmission	0
Zambia	2 283	388	82	40	Community transmission	0
Congo	2 222	119	47	0	Community transmission	0
South Sudan	2 148	0	41	0	Clusters of cases	1
Guinea-Bissau	1 902	60	26	1	Community transmission	0

Reporting Country/ Territory/Area	Total confirmed cases	Total confirmed new cases	Total deaths	Total new deaths	Transmission classification ¹	Days since last reported case
Cabo Verde	1 722	24	19	0	Clusters of cases	0
Sierra Leone	1 642	7	63	0	Community transmission	0
Eswatini	1 389	38	20	0	Clusters of cases	0
Benin	1 378	0	26	0	Community transmission	2
Rwanda	1 378	41	4	0	Sporadic cases	0
Mozambique	1 219	62	9	0	Clusters of cases	0
Niger	1 099	0	68	0	Community transmission	3
Equatorial Guinea	1 043	0	12	0	Community transmission	51
Burkina Faso	1 036	3	53	0	Community transmission	0
Zimbabwe	1 034	49	19	1	Sporadic cases	0
Uganda	1 029	4	0	0	Sporadic cases	0
Liberia	1 024	14	51	0	Community transmission	0
Chad	880	0	75	0	Community transmission	1
Namibia	861	76	1	0	Sporadic cases	0
Togo	720	0	15	0	Community transmission	1
Angola	525	19	26	0	Clusters of cases	0
United Republic of Tanzania	509	0	21	0	Community transmission	67
Sao Tome and Principe	412	3	12	0	Clusters of cases	0
Botswana	399	0	1	0	Clusters of cases	1
Mauritius	343	1	10	0	Clusters of cases	0
Comoros	317	0	7	0	Community transmission	1
Burundi	269	11	1	0	Clusters of cases	0
Lesotho	245	12	3	1	Sporadic cases	0

Reporting Country/ Territory/Area	Total confirmed cases	Total confirmed new cases	Total deaths	Total new deaths	Transmission classification ¹	Days since last reported case
Eritrea	232	0	0	0	Sporadic cases	4
Seychelles	100	0	0	0	Clusters of cases	4
Gambia	64	0	3	0	Sporadic cases	4
Territories ⁱⁱ						
Mayotte	2 724	13	40	0	Clusters of cases	0
Réunion	596	3	3	0	Clusters of cases	0
Americas						
United States of America	3 286 063	60 113	134 704	312	Community transmission	0
Brazil	1 864 681	24 831	72 100	631	Community transmission	0
Peru	326 326	3 616	11 870	188	Community transmission	0
Chile	317 657	2 616	7 024	45	Community transmission	0
Mexico	299 750	4 482	35 006	276	Community transmission	0
Colombia	150 445	5 083	5 307	188	Community transmission	0
Canada	107 590	243	8 783	10	Community transmission	0
Argentina	100 166	2 657	1 859	41	Community transmission	0
Ecuador	68 459	589	5 063	16	Community transmission	0
Bolivia (Plurinational State of)	48 187	987	1 807	53	Community transmission	0
Panama	45 633	1 301	909	16	Community transmission	0
Dominican Republic	45 506	974	903	6	Community transmission	0
Guatemala	29 355	757	1 219	47	Community transmission	0
Honduras	28 090	507	774	3	Community transmission	0
El Salvador	9 978	304	267	7	Community transmission	0
Venezuela (Bolivarian Republic of)	9 465	287	89	4	Community transmission	0
Costa Rica	7 596	365	30	2	Community transmission	0

Reporting Country/ Territory/Area	Total confirmed cases	Total confirmed new cases	Total deaths	Total new deaths	Transmission classification ⁱ	Days since last reported case
Haiti	6 727	37	139	0	Community transmission	0
Paraguay	2 980	160	25	4	Community transmission	0
Cuba	2 428	2	87	0	Clusters of cases	0
Nicaragua	2 411	0	91	0	Community transmission	5
Uruguay	987	1	31	1	Clusters of cases	0
Suriname	762	21	18	0	Clusters of cases	0
Jamaica	758	0	10	0	Clusters of cases	1
Guyana	297	6	17	0	Clusters of cases	0
Trinidad and Tobago	133	0	8	0	Sporadic cases	7
Bahamas	111	0	11	0	Clusters of cases	1
Barbados	103	0	7	0	Clusters of cases	1
Antigua and Barbuda	74	0	3	0	Clusters of cases	2
Belize	37	0	2	0	Sporadic cases	2
Saint Vincent and the Grenadines	35	6	0	0	Sporadic cases	0
Grenada	23	0	0	0	Clusters of cases	48
Saint Lucia	22	0	0	0	Sporadic cases	10
Dominica	18	0	0	0	Clusters of cases	31
Saint Kitts and Nevis	17	0	0	0	No cases	3
Territoriesⁱⁱ						
Puerto Rico	10 010	356	167	0	Community transmission	0
French Guiana	6 170	221	29	3	Community transmission	0
Martinique	255	0	15	0	Clusters of cases	2
United States Virgin Islands	206	25	6	0	Clusters of cases	0
Cayman Islands	201	0	1	0	Clusters of cases	11

Reporting Country/ Territory/Area	Total confirmed cases	Total confirmed new cases	Total deaths	Total new deaths	Transmission classification ¹	Days since last reported case
Guadeloupe	190	0	14	0	Clusters of cases	3
Bermuda	150	0	9	0	Sporadic cases	2
Aruba	105	0	3	0	Sporadic cases	7
Sint Maarten	78	0	15	0	No cases	10
Turks and Caicos Islands	72	1	2	0	Clusters of cases	0
Saint Martin	44	0	3	0	Sporadic cases	9
Curaçao	26	1	1	0	Sporadic cases	0
Falkland Islands (Malvinas)	13	0	0	0	No cases	79
Montserrat	12	0	1	0	No cases	3
British Virgin Islands	8	0	1	0	No cases	59
Bonaire, Sint Eustatius and Saba	7	0	0	0	No cases	49
Saint Barthélemy	6	0	0	0	No cases	105
Anguilla	3	0	0	0	No cases	101
Saint Pierre and Miquelon	2	0	0	0	No cases	4
Eastern Mediterranean						
Iran (Islamic Republic of)	259 652	2 349	13 032	203	Community transmission	0
Pakistan	253 604	1 979	5 320	54	Clusters of cases	0
Saudi Arabia	235 111	2 852	2 243	20	Clusters of cases	0
Qatar	104 016	418	149	2	Community transmission	0
Egypt	83 001	931	3 935	77	Clusters of cases	0
Iraq	79 735	2 229	3 250	100	Community transmission	0
Oman	58 179	2 164	259	2	Community transmission	0
Kuwait	55 508	614	393	3	Clusters of cases	0
United Arab Emirates	55 198	344	334	1	Community transmission	0

Reporting Country/ Territory/Area	Total confirmed cases	Total confirmed new cases	Total deaths	Total new deaths	Transmission classification ⁱ	Days since last reported case
Afghanistan	34 740	289	1 045	35	Clusters of cases	0
Bahrain	33 476	535	109	1	Clusters of cases	0
Morocco	15 936	191	255	5	Clusters of cases	0
Sudan	10 316	66	657	7	Community transmission	0
Djibouti	4 977	5	56	0	Clusters of cases	0
Somalia	3 072	13	93	0	Sporadic cases	0
Lebanon	2 419	85	36	0	Clusters of cases	0
Libya	1 512	79	40	1	Clusters of cases	0
Yemen	1 502	33	425	7	Community transmission	0
Tunisia	1 302	39	50	0	Sporadic cases	0
Jordan	1 183	4	10	0	Clusters of cases	0
Syrian Arab Republic	417	23	19	3	Community transmission	0
Territoriesⁱⁱ						
occupied Palestinian territory	7 441	404	41	2	Clusters of cases	0
Europe						
Russian Federation	739 947	6 248	11 614	175	Clusters of cases	0
The United Kingdom	290 137	530	44 830	11	Community transmission	0
Spain	255 953	2 045	28 406	3	Clusters of cases	0
Italy	243 230	169	34 967	13	Community transmission	0
Turkey	214 001	1 008	5 382	19	Community transmission	0
Germany	198 963	0	9 064	0	Clusters of cases	1
France	162 390	1 115	29 925	18	Clusters of cases	0
Sweden	75 826	928	5 536	10	Community transmission	0
Belarus	65 114	182	468	4	Community transmission	0

Reporting Country/ Territory/Area	Total confirmed cases	Total confirmed new cases	Total deaths	Total new deaths	Transmission classification ¹	Days since last reported case
Belgium	62 781	74	9 787	5	Community transmission	0
Kazakhstan	61 755	1 856	375	0	Clusters of cases	0
Ukraine	54 771	638	1 412	14	Community transmission	0
Netherlands	51 038	71	6 128	0	Community transmission	0
Portugal	46 818	306	1 662	2	Community transmission	0
Israel	39 294	1 279	364	7	Pending	0
Poland	38 190	299	1 576	5	Community transmission	0
Romania	32 948	413	1 901	17	Community transmission	0
Switzerland	32 861	148	1 685	0	Community transmission	0
Armenia	32 490	339	581	8	Community transmission	0
Ireland	25 638	10	1 746	0	Clusters of cases	0
Azerbaijan	24 570	529	313	7	Clusters of cases	0
Republic of Moldova	19 439	57	652	10	Community transmission	0
Austria	18 859	12	708	0	Community transmission	0
Serbia	18 639	279	405	12	Community transmission	0
Uzbekistan	13 872	679	64	3	Clusters of cases	0
Czechia	13 238	64	353	1	Clusters of cases	0
Denmark	13 037	91	610	1	Community transmission	0
Kyrgyzstan	11 538	421	149	2	Clusters of cases	0
Norway	8 981	16	253	1	Clusters of cases	0
North Macedonia	8 197	86	385	3	Clusters of cases	0
Bulgaria	7 411	159	276	8	Clusters of cases	0
Finland	7 295	1	329	0	Clusters of cases	0
Bosnia and Herzegovina	6 979	95	224	4	Community transmission	0

Reporting Country/ Territory/Area	Total confirmed cases	Total confirmed new cases	Total deaths	Total new deaths	Transmission classification ⁱ	Days since last reported case
Tajikistan	6 595	44	55	0	Pending	0
Luxembourg	4 956	31	111	0	Community transmission	0
Hungary	4 247	13	595	0	Community transmission	0
Greece	3 826	23	193	0	Clusters of cases	0
Croatia	3 775	53	119	0	Clusters of cases	0
Albania	3 667	96	97	2	Clusters of cases	0
Estonia	2 014	0	69	0	Clusters of cases	2
Slovakia	1 902	1	28	0	Clusters of cases	0
Iceland	1 900	4	10	0	Community transmission	0
Lithuania	1 874	5	79	0	Community transmission	0
Slovenia	1 849	8	111	0	Clusters of cases	0
Montenegro	1 287	66	24	1	Clusters of cases	0
Latvia	1 174	1	31	1	Sporadic cases	0
Cyprus	1 022	1	19	0	Clusters of cases	0
Georgia	999	4	15	0	Sporadic cases	0
Andorra	858	3	52	0	Community transmission	0
San Marino	716	0	42	0	Community transmission	4
Malta	674	0	9	0	Sporadic cases	4
Monaco	99	0	1	0	Sporadic cases	37
Liechtenstein	85	0	1	0	Sporadic cases	7
Holy See	12	0	0	0	Sporadic cases	68
Territoriesⁱⁱ						
Kosovo[1]	5 075	187	98	6	Community transmission	0

Reporting Country/ Territory/Area	Total confirmed cases	Total confirmed new cases	Total deaths	Total new deaths	Transmission classification ¹	Days since last reported case
Isle of Man	336	0	24	0	No cases	53
Jersey	329	4	31	0	Community transmission	0
Guernsey	252	0	13	0	Community transmission	72
Faroe Islands	188	0	0	0	Pending	6
Gibraltar	180	0	0	0	Clusters of cases	3
Greenland	13	0	0	0	No cases	46
South-East Asia						
India	906 752	28 498	23 727	553	Clusters of cases	0
Bangladesh	186 894	3 099	2 391	39	Community transmission	0
Indonesia	76 981	1 282	3 656	50	Community transmission	0
Nepal	16 945	144	38	0	Clusters of cases	0
Thailand	3 227	7	58	0	Clusters of cases	0
Maldives	2 762	31	13	0	Clusters of cases	0
Sri Lanka	2 646	29	11	0	Clusters of cases	0
Myanmar	336	5	6	0	Clusters of cases	0
Bhutan	84	0	0	0	Sporadic cases	1
Timor-Leste	24	0	0	0	No cases	81
Western Pacific						
China	85 623	55	4 649	1	Clusters of cases	0
Philippines	57 006	747	1 599	65	Community transmission	0
Singapore	46 283	322	26	0	Clusters of cases	0
Japan	22 220	352	982	0	Clusters of cases	0
Republic of Korea	13 512	33	289	0	Clusters of cases	0

Reporting Country/ Territory/Area	Total confirmed cases	Total confirmed new cases	Total deaths	Total new deaths	Transmission classification ⁱ	Days since last reported case
Australia	9 980	183	108	0	Clusters of cases	0
Malaysia	8 725	7	122	0	Clusters of cases	0
New Zealand	1 195	1	22	0	Clusters of cases	0
Viet Nam	372	0	0	0	Clusters of cases	1
Mongolia	230	0	0	0	Sporadic cases	1
Cambodia	165	9	0	0	Sporadic cases	0
Brunei Darussalam	141	0	3	0	No cases	67
Fiji	26	0	0	0	Sporadic cases	2
Lao People's Democratic Republic	19	0	0	0	Sporadic cases	92
Papua New Guinea	11	0	0	0	Sporadic cases	18
Territoriesⁱⁱ						
Guam	304	0	5	0	Clusters of cases	2
French Polynesia	62	0	0	0	Sporadic cases	16
Northern Mariana Islands (Commonwealth of the)	33	0	2	0	Pending	2
New Caledonia	21	0	0	0	Sporadic cases	34
Subtotal for all regions	12 964 068	196 775	570 275	3 634		
Other*	741	0	13	0	Not applicable	-
Grand total	12 964 809	196 775	570 288	3 634		

**See [Annex 1](#) for data, table and figure notes.

Technical guidance and other resources

- To view all technical guidance documents regarding COVID-19, please go to [this webpage](#).
- Updates from WHO regional offices
 - [WHO AFRO](#)
 - [WHO EMRO](#)
 - [WHO EURO](#)
 - [WHO PAHO](#)
 - [WHO SEARO](#)
 - [WHO WPRO](#)
- [Research and Development](#)
- [Online courses on COVID-19](#) and in [additional national languages](#)
- [The Strategic Preparedness and Response Plan](#) (SPRP) outlining the support the international community can provide to all countries to prepare and respond to the virus
- [WHO Coronavirus Disease \(COVID-19\) Dashboard](#)
- [Weekly COVID-19 Operations Updates](#)

Recommendations and advice for the public

- [Protect yourself](#)
- [Questions and answers](#)
- [Travel advice](#)
- [EPI-WIN](#): tailored information for individuals, organizations and communities

Case definitions

WHO periodically updates the [Global Surveillance for human infection with coronavirus disease \(COVID-19\)](#) document which includes surveillance definitions.

Definition of COVID-19 death

A COVID-19 death is defined for surveillance purposes as a death resulting from a clinically compatible illness in a probable or confirmed COVID-19 case, unless there is a clear alternative cause of death that cannot be related to COVID-19 disease (e.g. trauma). There should be no period of complete recovery between the illness and death.

Further guidance for certification and classification (coding) of COVID-19 as cause of death is available [here](#) and [here](#).

Annex 1: Data, table and figure notes

Caution must be taken when interpreting all data presented. Differences are to be expected between information products published by WHO, national public health authorities, and other sources using different inclusion criteria and different data cut-off times. While steps are taken to ensure accuracy and reliability, all data are subject to continuous verification and change. Case detection, definitions, testing strategies, reporting practice, and lag times differ between countries/territories/areas. These factors, amongst others, influence the counts presented, with variable underestimation of true case and death counts, and variable delays to reflecting these data at global level.

The designations employed, and the presentation of these materials do not imply the expression of any opinion whatsoever on the part of WHO concerning the legal status of any country, territory or area or of its authorities, or concerning the delimitation of its frontiers or boundaries. Dotted and dashed lines on maps represent approximate border lines for which there may not yet be full agreement. Countries, territories and areas are arranged under the administering WHO region.

The mention of specific companies or of certain manufacturers' products does not imply that they are endorsed or recommended by WHO in preference to others of a similar nature that are not mentioned. Errors and omissions excepted, the names of proprietary products are distinguished by initial capital letters.

[1] All references to Kosovo should be understood to be in the context of the United Nations Security Council resolution 1244 (1999). In the map, number of cases of Serbia and Kosovo (UNSCR 1244, 1999) have been aggregated for visualization purposes.

Counts reflect laboratory-confirmed cases and deaths, based on [WHO case definitions](#), unless stated otherwise (see Country, territory, or area-specific updates and errata), and include both domestic and repatriated cases.

Other*: includes cases reported from international conveyances.

Due to the recent trend of countries conducting data reconciliation exercises which remove large numbers of cases or deaths from their total counts, WHO will now display such data as negative numbers in the "new cases" / "new deaths" columns as appropriate. This will aid readers in identifying when such adjustments occur. When additional details become available that allow the subtractions to be suitably apportioned to previous days, graphics will be updated accordingly. Prior situation reports will not be edited; see covid19.who.int for the most up-to-date data.

Additional table notes

ⁱ Transmission classification is based on a process of country/territory/area self-reporting. Classifications are reviewed on a weekly basis and may be revised as new information becomes available. Differing degrees of transmission may be present within countries/territories/areas; classification is based on the highest category reported within a country/territory/area. Categories:

- No cases: with no confirmed cases
- Sporadic cases: with one or more cases, imported or locally detected
- Clusters of cases: experiencing cases, clustered in time, geographic location and/or by common exposures
- Community transmission: experiencing larger outbreaks of local transmission defined through an assessment of factors including, but not limited to: large numbers of cases not linkable to transmission chains; large numbers of cases from sentinel lab surveillance; and/or multiple unrelated clusters in several areas of the country/territory/area
- Pending: transmission classification has not been reported to WHO

ⁱⁱ "Territories" include territories, areas, overseas dependencies and other jurisdictions of similar status.

Country, territory, or area-specific updates and errata

- **Update 14 July 2020, Bulgaria:** Counts adjusted retrospectively by national authorities: case counts adjusted between 11 July and 13 July.